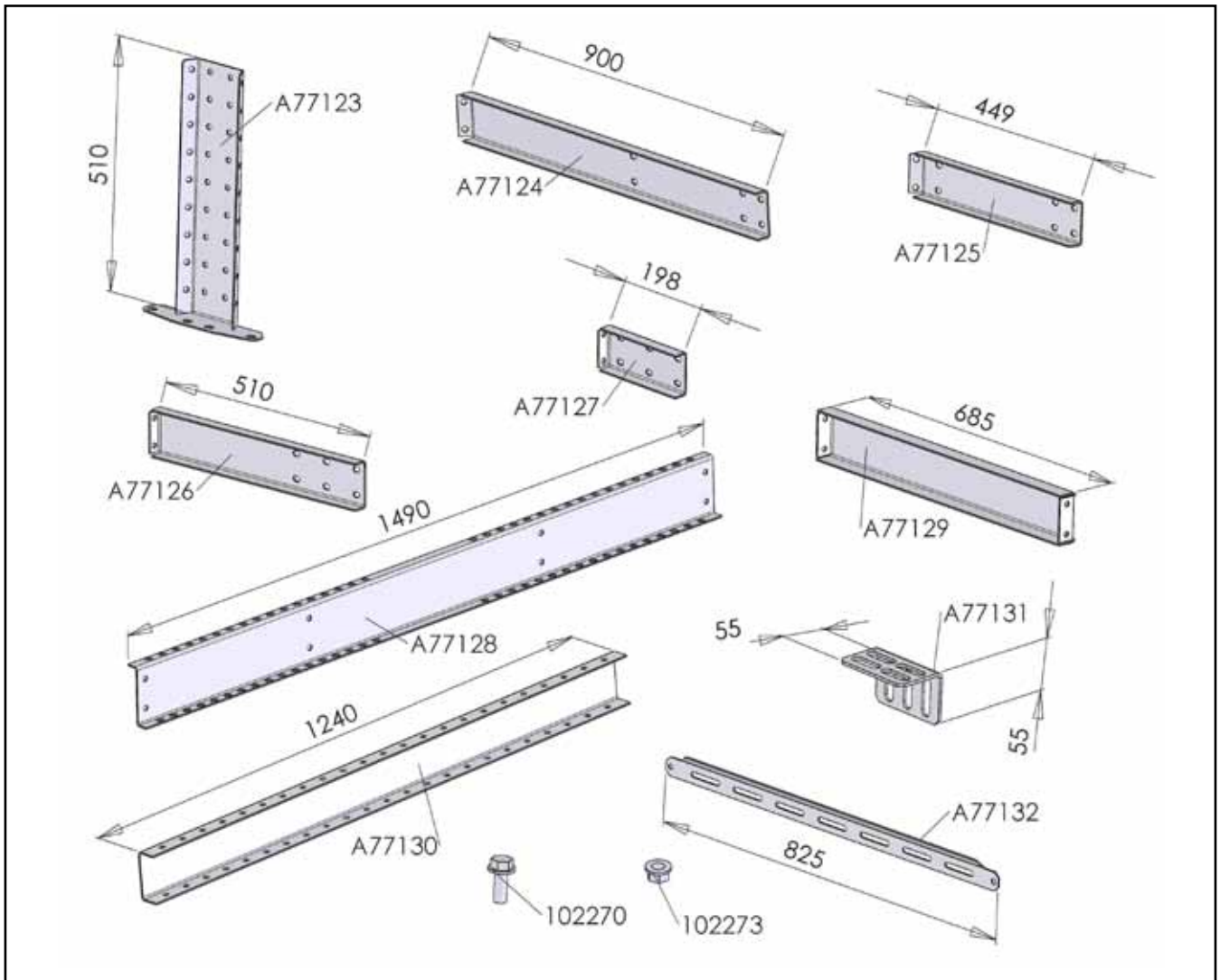


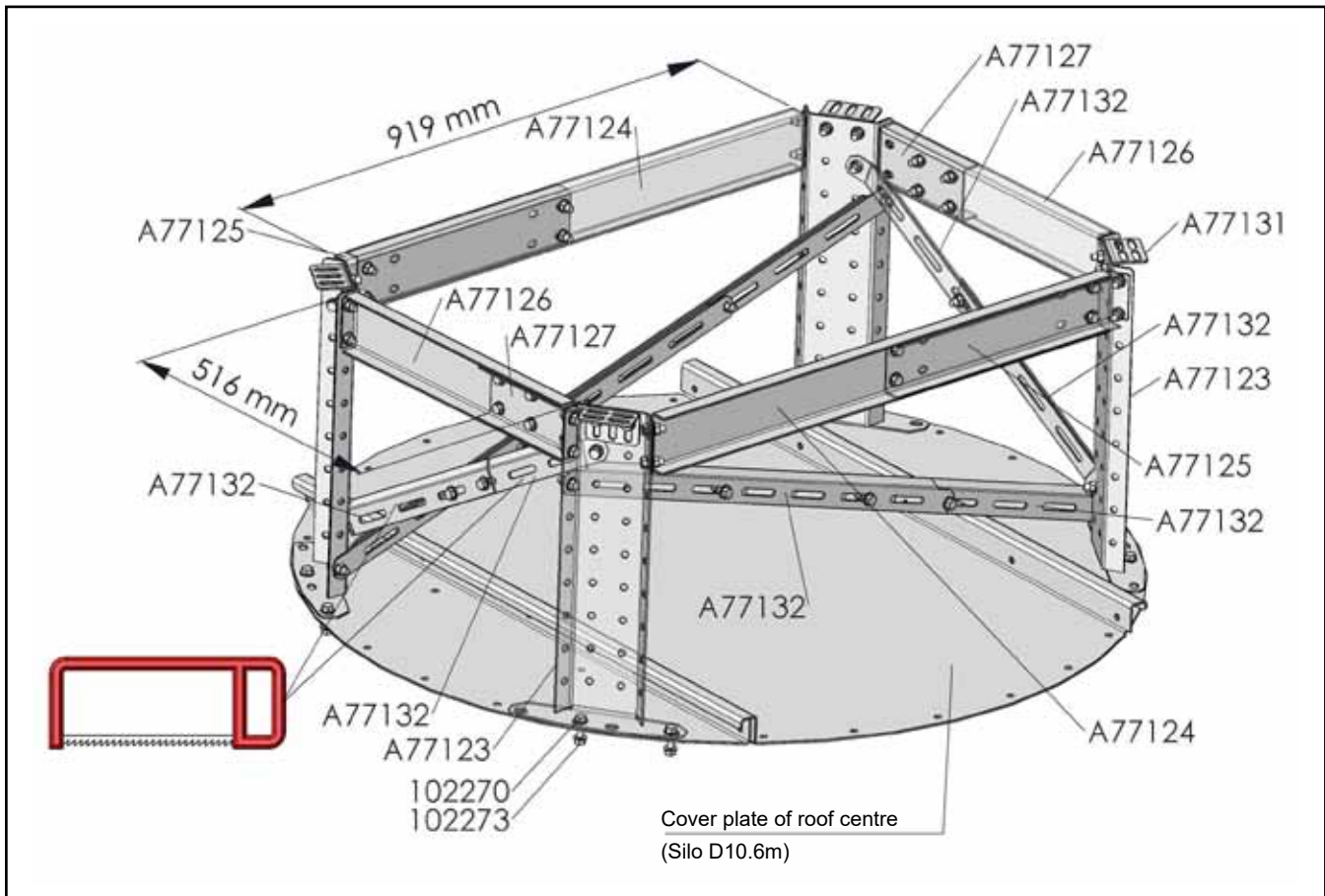
## MIDDLE SUPPORT A77011P



Item	Denomination	Pcs
A77123	MIDDLE SUPPORT LEG M22	4
A77124	MIDDLE SUPPORT BEAM 1 M22	2
A77125	MIDDLE SUPPORT BEAM 2 M22	2
A77126	MIDDLE SUPPORT BEAM 3 M22	2
A77127	MIDDLE SUPPORT BEAM 4 M22	2
A77128	MIDDLE SUPPORT BEAM 5 M22	2
A77129	MIDDLE SUPPORT BEAM 6 M22	4
A77130	MIDDLE SUPP EXTRA BEAM M22	2
A77131	MIDDLE COVER CORNER PLATE M22	4
A77132	MIDDLE SUPPORT M22	8
102270	HEXAGON FLANGE BOLTS 10X25 ZN 8.8 DIN 6921	86
102273	HEX FLANGE NUT M10 ZN 8 DIN 6923	86

- The middle support A77011P can only be used in Antti grain silos D10.6 and D12.1m.
- The M10 fastening screws must be tightened to 50 Nm.

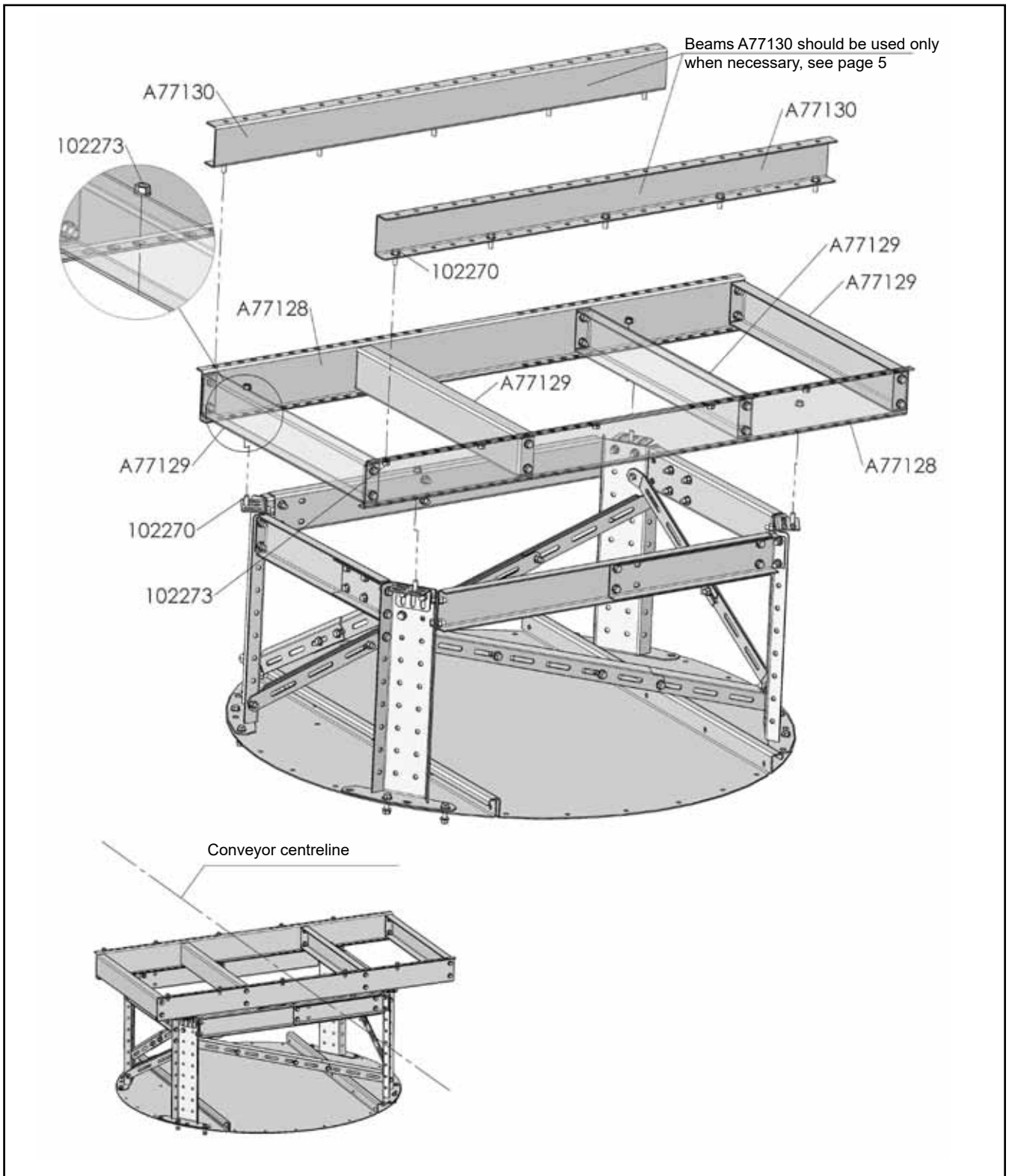
## Fastening the middle support to roof



- Mountings M10x25 8.8 flange screws.
- The number of fastening screws indicated in the image must be adhered to.
- Note: The width dimensions 516x919mm are suitable for the Antti grain silo D10.6.

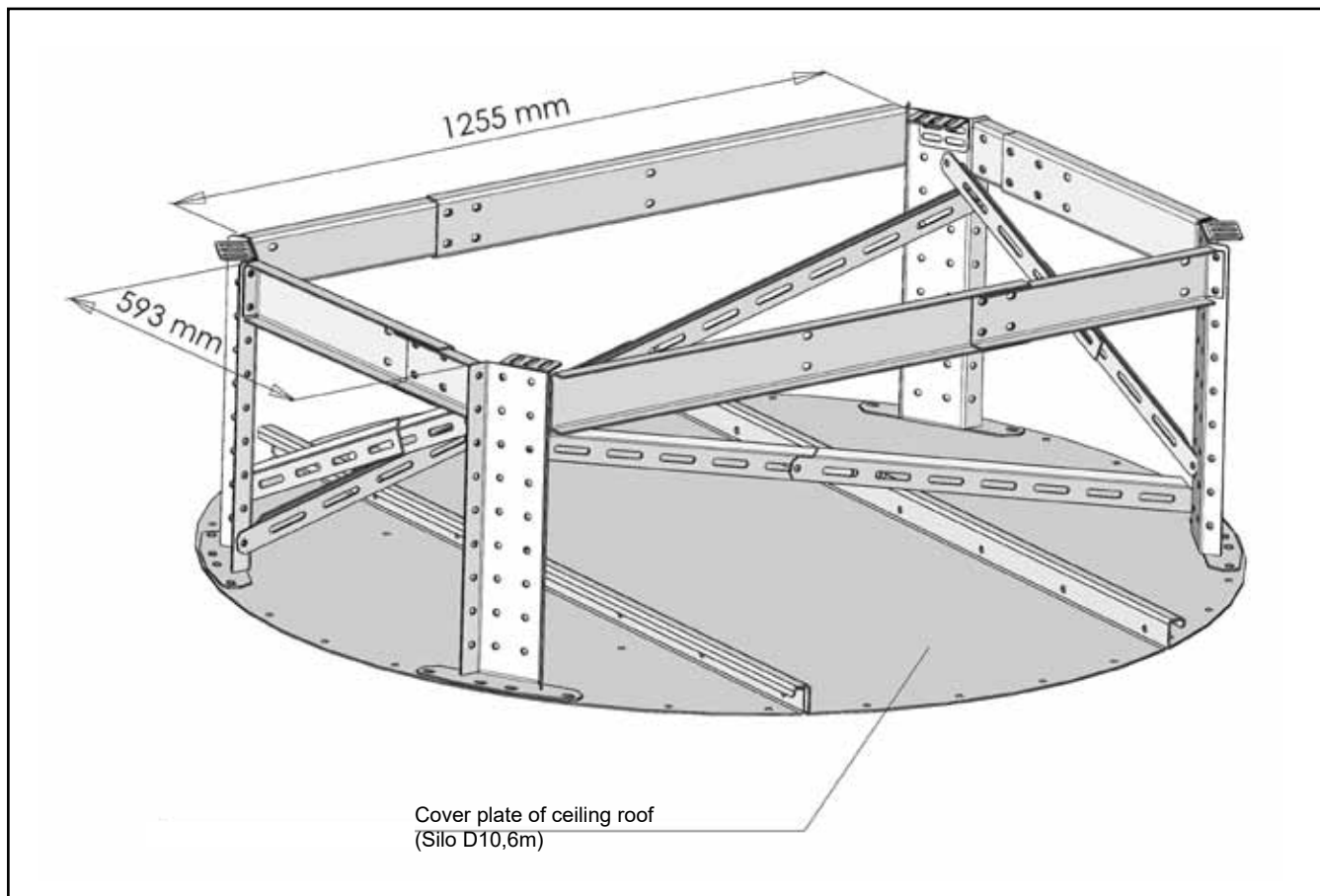
See the corresponding dimensions of silo D12.1 on page 4

## Assembling the top beam layer of the middle support



- Mountings M10x25 8.8 flange screws.
- The number of fastening screws indicated in the image must be adhered to.

## Adjusting the width of the middle support for silo D12.1



- The assembly is carried out as presented on page 2 but the width is adjusted as illustrated here.

## Illustration of applications of the middle support A77011P

