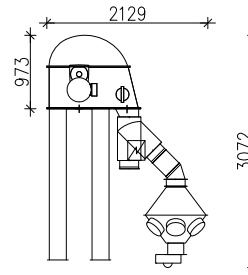
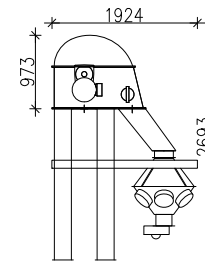




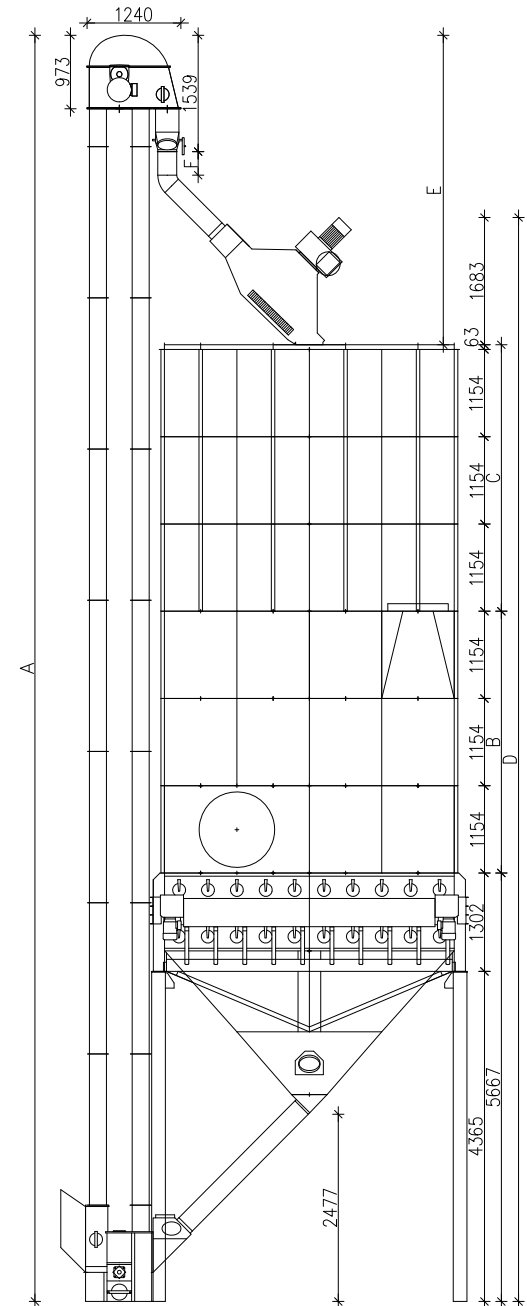
2- tj/way + 6- tj/way



6- tj/way



3- tj/way



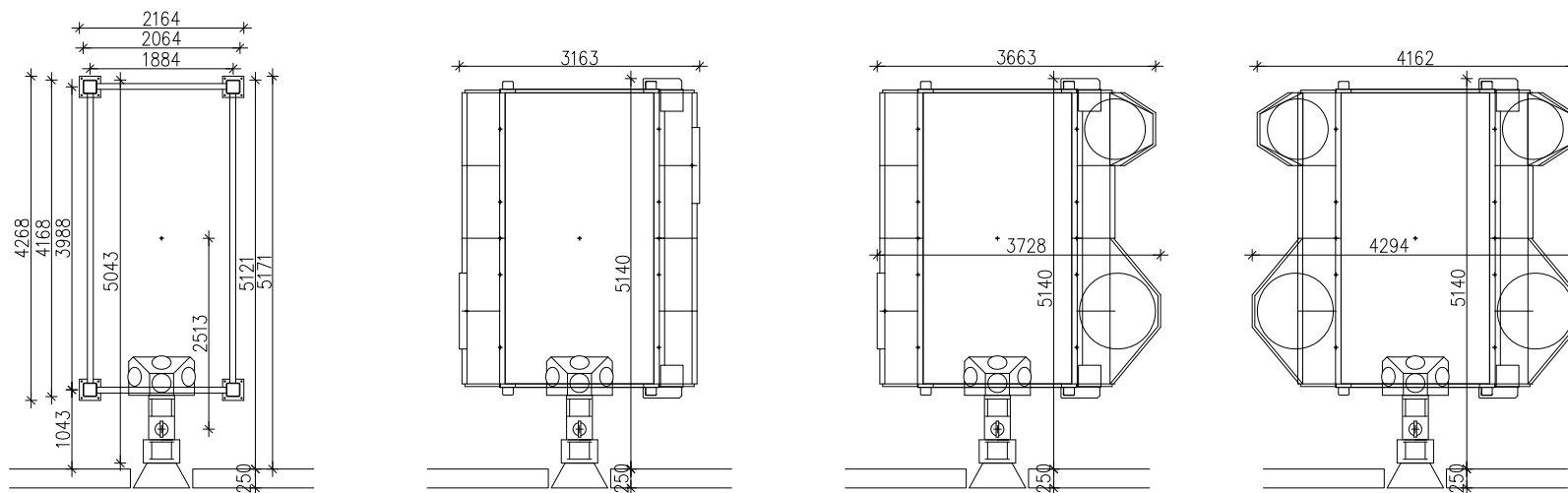
A:	Elevaattorin mitta	Elevator height
B:	Lämpökennojen mitta	Dimension of drying sections
C:	Yläsäiliöt + kansi mitta	Dimension of top sections + roof
D:	Koneen kokonaiskorkeus + esipuhdistin mitta	Total height of dryer + pre-cleaner
E:	Elevaattorin yläpään ja kannen välinen mitta	Dimension between the elevator top and the dryer roof
F:	Suoran putken pituus välillä 3-tiejakaja - valukäyrä	Straight pipes length between 3-way divider - cast elbow

Jalustatyyppi /Base type	4W
jalusta / base m ³	4,00
kenno / section m ³	6,24
yläsäiliö / top section m ³	8,64

P 250 esipuhdistin / pre-cleaner

4W	500 mm ilmapäädty / air channel ends						1000 mm ilmapäädty / air channel ends				
	23	33	34	43	44	45	54	55	65	75	85
V [m ³]	42,4	48,6	57,3	54,8	63,5	72,2	69,8	78,4	84,6	90,8	97,1
A 3 -tj /way [mm]	15700	16700	17700	17700	18700	20200	20200	21200	22200	23700	24700
A 6 -tj /way	16200	17700	18700	18700	19700	21200	21200	22200	23200	24700	25700
A 2- tj/way + 6- tj /way [mm]	16700	17700	18700	18700	20200	21200	21200	22200	23700	24700	25700
B [mm]	2308	3462	3462	4616	4616	4616	5770	5770	6924	8079	9232
C [mm]	3525	3525	4679	3525	4679	5833	4679	5833	5833	5833	5833
D [mm]	13183	14337	15491	15446	16645	17799	17799	18953	20107	21261	22415
E 3 -tj /way [mm]	4247	4093	3939	3984	3785	4131	4131	3977	3823	4169	4015
E 6 -tj / way	4747	5093	4939	4984	4785	5131	5131	4977	4823	5169	5015
E 2- tj/way + 6- tj /way [mm]	5247	5093	4939	4984	5285	5131	5131	4977	5323	5169	5015
F 3 -tj /way[mm]	466	312	158	251	4	350	350	289	42	388	234

500 mm ilmapäädyt / air channel ends



1000 mm ilmapäädyt / air channel ends

