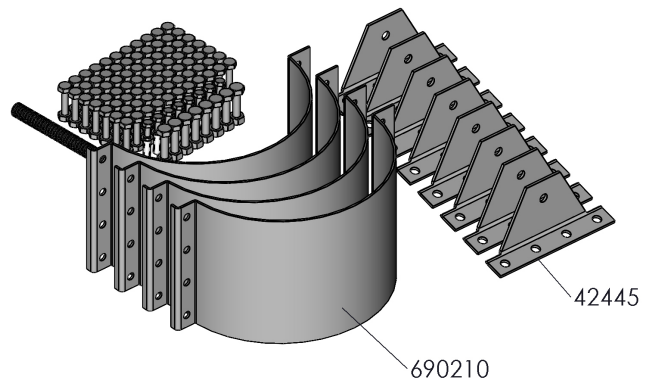


42450

## GRAIN SILO SCREW CONV EQUIP D5,3-7,5 M03 (1 pcs)

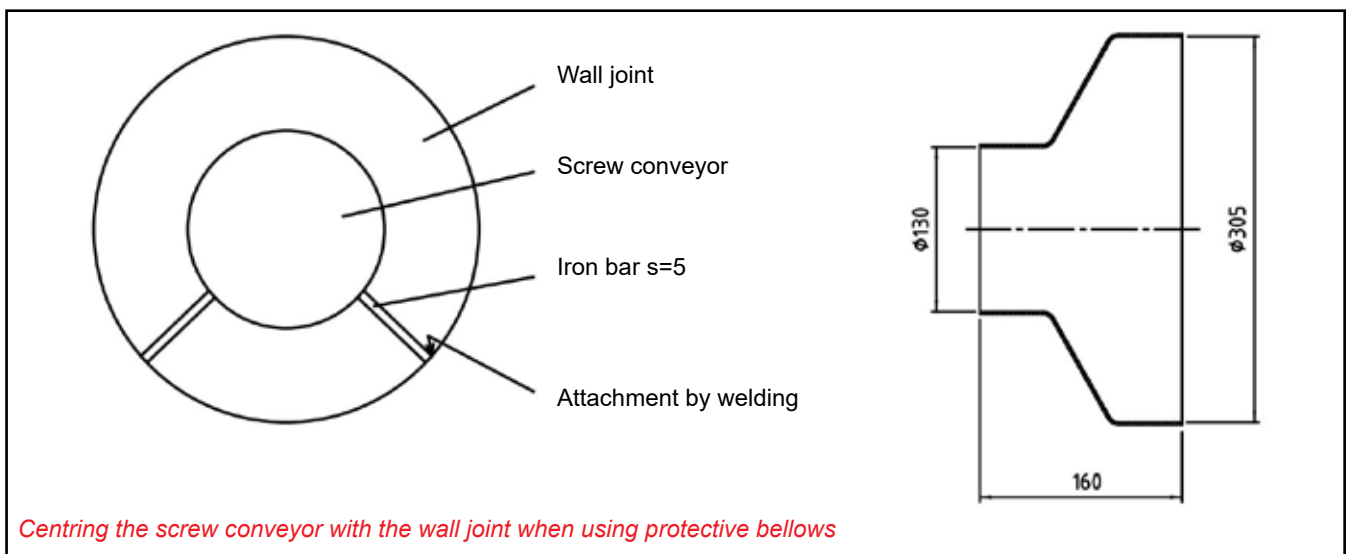
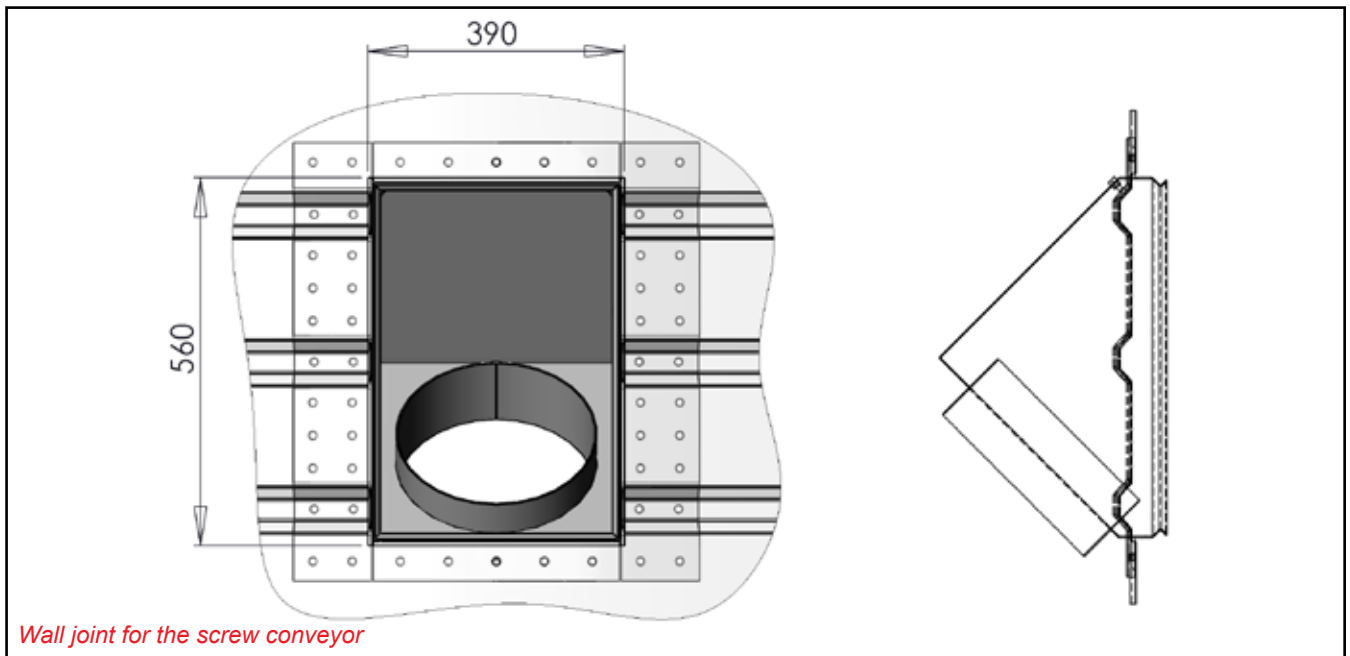


| Part no | Name  | Qty | Draw. no | Mass | Group |
|---------|---|-----|----------|------|-------|
| 106003  | SCREW PACKAGE, SCREW CONVEYOR 9994 200 027    | 1   | 106003   | 4.02 | 2010  |
| 690210  | TENSION BAND OF ROUND SILO COVER PLATE 32145  | 2   | 32145    | 5.38 | 4960  |
| 42445   | COVER PLATE'S FASTENING PART - ROUND SILO M03 | 8   | 42445    | 0.5  | 3700  |

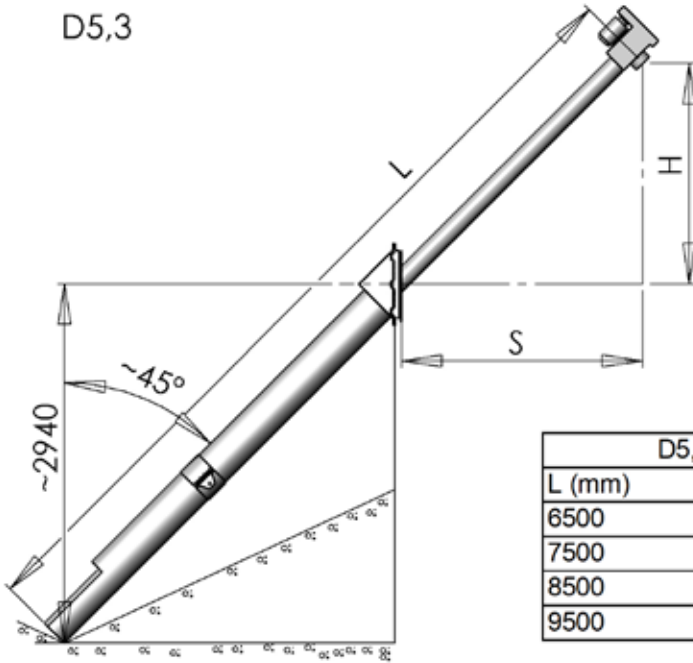
## Installing the screw conveyor

Install the wall joint for the screw conveyor inside the silo at a suitable height, facing the unloading area. Look up the installation height in Fig. 45 that shows the distance from the bottom of the silo to the centre of the joint. Attach the joint to the nearest folds. Refer to the table for a screw conveyor of suitable length, provided that the installation angle is close to the angle given in the instructions.

Make a 390 mm x 560 mm opening in the side of the silo for installation. Using the wall joint as template, drill D10,5 holes for the attachment bolts. Fix the frame using M10 bolts. Remember to apply sealing mastic.

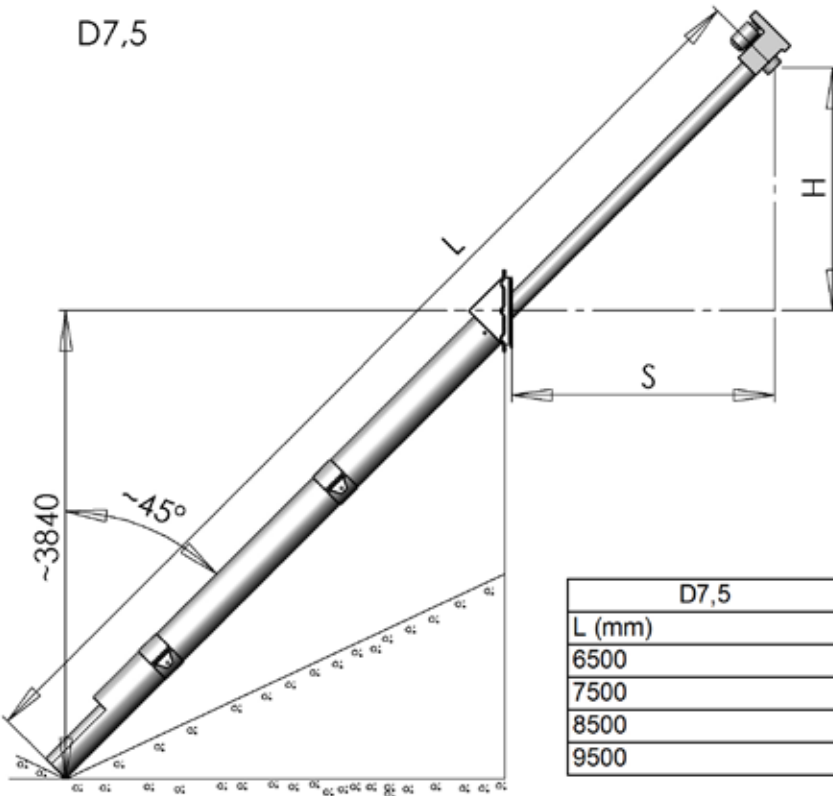


D5,3



| D5,3   |        |        |
|--------|--------|--------|
| L (mm) | H (mm) | S (mm) |
| 6500   | 1680   | 1850   |
| 7500   | 2390   | 2560   |
| 8500   | 3100   | 3270   |
| 9500   | 3800   | 3970   |

D7,5



| D7,5   |        |        |
|--------|--------|--------|
| L (mm) | H (mm) | S (mm) |
| 6500   | 800    | 970    |
| 7500   | 1500   | 1670   |
| 8500   | 2210   | 2380   |
| 9500   | 2920   | 3090   |

Continue by assembling the protective tube for the screw conveyor in the order shown in Fig. 46. Cut a slot, 625 mm in length, all the way to the centre of the tube through which the grain can enter the screw conveyor. If the installation height or the installation angle differs from the values given in the instructions, you may need to shorten either the legs or the protective tube. However, do not leave out the supports, even if you were using a shorter tube.

Join the tubes together using wide bands. Be careful to place the band right in the middle of the seam. Also provide the band joint with attachment parts 42445 for the support legs. Wrench tight the eight M10x40 bolts for the joint and make sure the tubes cannot move with respect to each other. After the assembly, lift the tube in place in the wall joint and fix it by its top part to the wall joint using two M10 bolts (see Fig. 47). Drill holes for the bolts in both sides. NOTE! If the screw conveyor is equipped with a protective cage, about 300 mm in diameter, you may need to remove these two M10 bolts to install the conveyor screw.

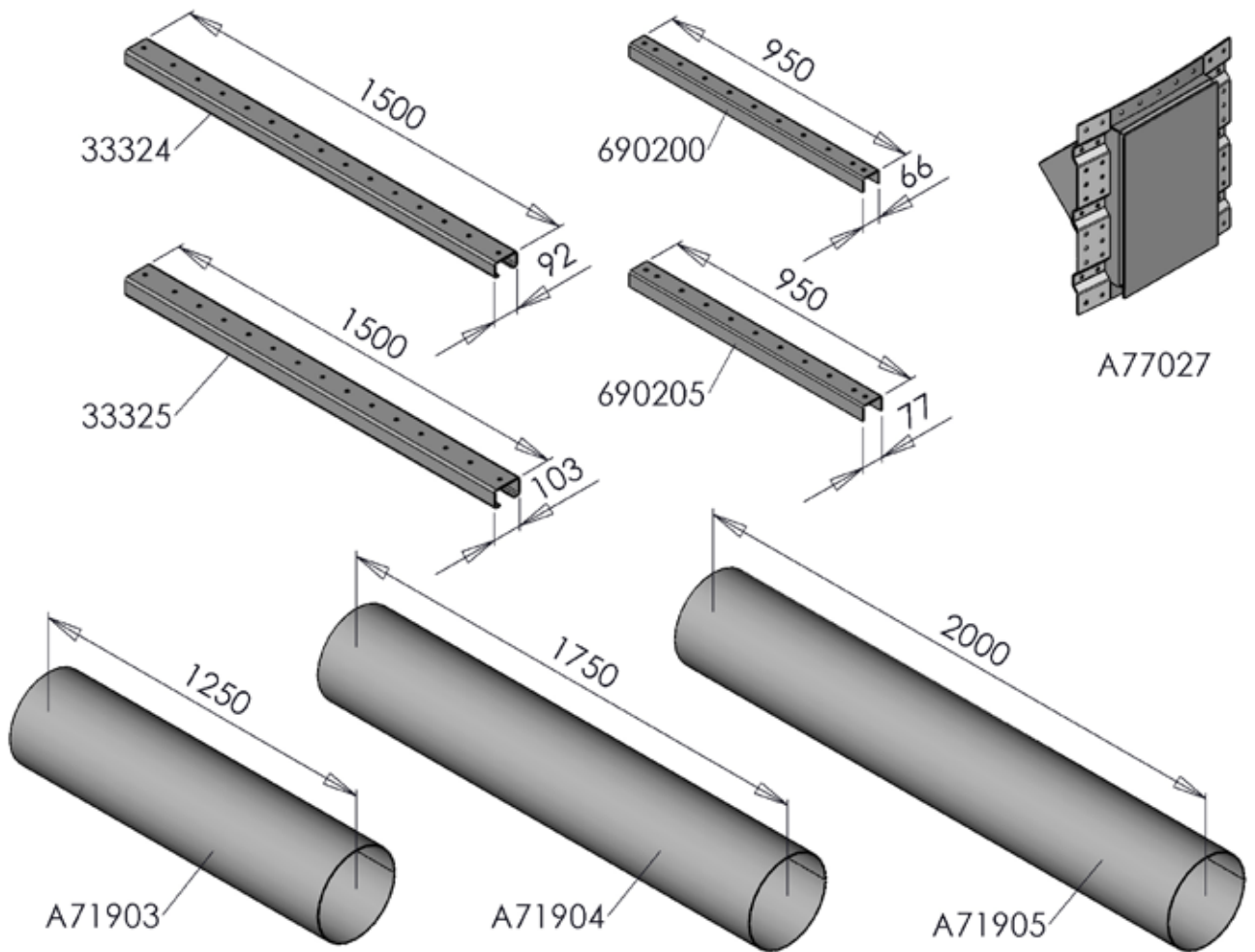
The protective tube is supported by the support legs. Attach the upper end of the support leg to the attachment part using an M12 bolt. The attachment part is fixed in the band. You must bend the attachment parts in order to adjust the legs into the correct angle. Attach the lower part of the support leg to the attachment part using a M12 bolt, and attach it to the foundation by means of expansion anchors, see point "Fixing the expansion anchors". Join the support leg parts together using at least two M10 bolts.

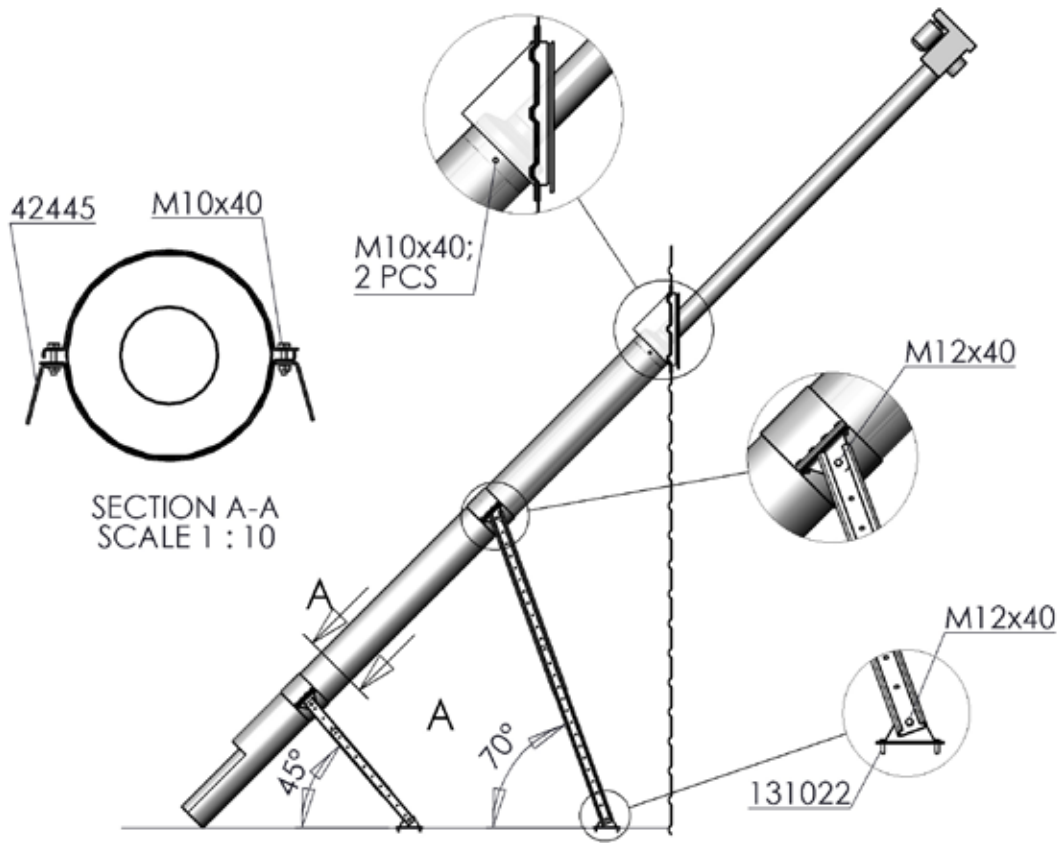
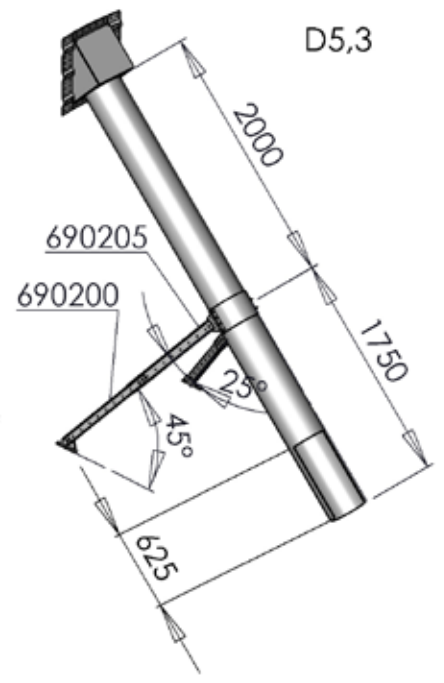
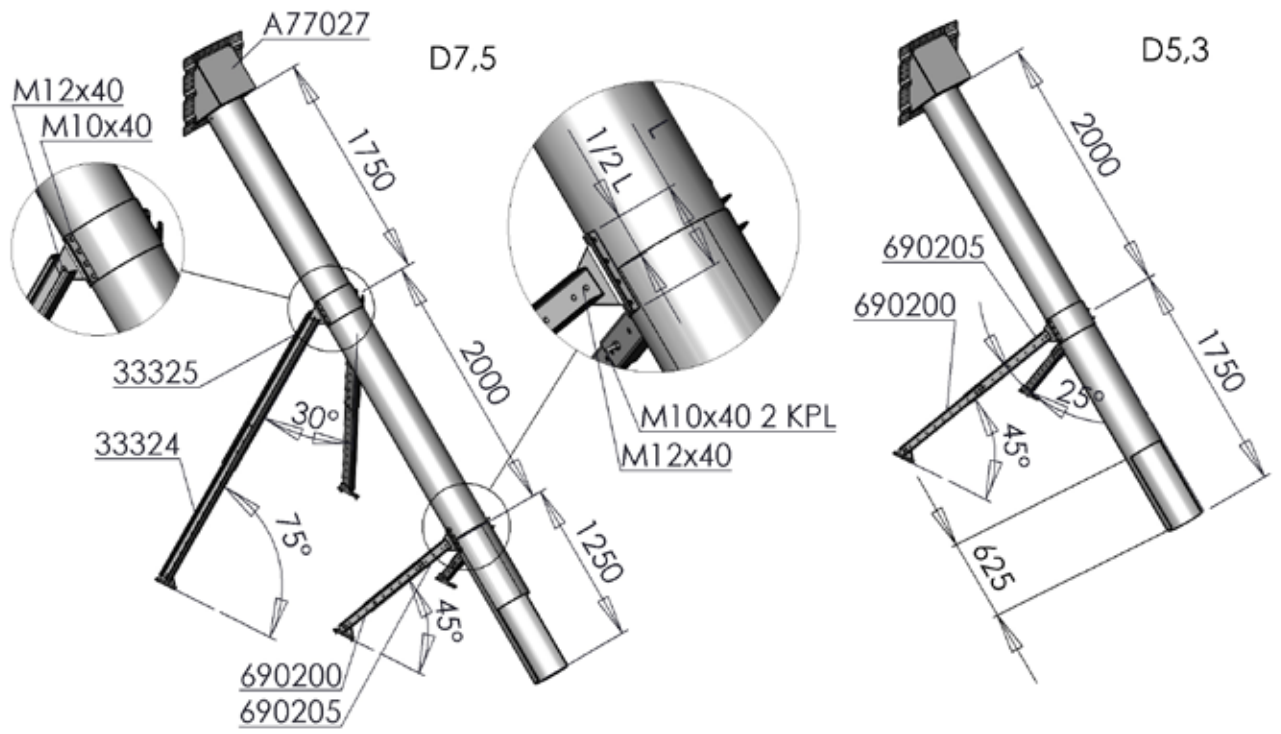
It is essential that the angle, formed by the support legs, is correct. The correct angle for the support legs is presented in Fig. 46. The angle between the screw conveyor and the silo wall should be 45°.

Centre the screw conveyor with the protective tube before sealing the conveyor and the wall joint. The screw conveyor and the protective tube can be sealed using the protective bellows (Fig. 49) and the centring piece. Centring pieces (Fig. 48) are available in sizes 5", 6" and 8".

If you intend to use protective bellows, carry out centring using locally crafted pieces of plate before installing the bellows, see Fig. 42. The protective bellows are manufactured of elastic rubber, which makes them suitable for either 5" or 6" screws. Apply sealing mastic to the centring pieces.

Also support the screw conveyor by its drive head on the wall element on the outside using, for example, a D5 mm wire rope. The angle between the wall and the wire rope shall be 45 degrees. Use a lifting lug for fixing the wire rope in the wall.





**106003      SCREW PACKAGE, SCREW CONVEYOR 9994 200 027 (1 pcs)**

| <b>Part no</b> | <b>Name</b>                      | <b>Qty</b> | <b>Draw. no</b> | <b>Mass</b> | <b>Group</b> |
|----------------|----------------------------------|------------|-----------------|-------------|--------------|
| 102540         | BOLT HEX ZN 8.8 12X40 AM DIN933  | 8          |                 | 0.04        | 2010         |
| 110570         | NUT M12 ZN8 DIN934               | 8          |                 | 0.015       | 2010         |
| 131022         | EXPANDER BOLT M 8X30 0904 010 08 | 8          |                 | 0.01        | 2000         |
| 101810         | BOLT HEX ZN 8.8 8X16 AM DIN933   | 8          |                 | 0.01        | 2010         |
| 102250         | BOLT HEX ZN 8.8 10X40 AM DIN933  | 77         |                 | 0.03        | 2010         |
| 110560         | NUT M10 ZN 8 DIN934              | 77         |                 | 0.01        | 2010         |
| 111550         | WASHER M 10 DIN125 ZN            | 48         |                 | 0.004       | 2010         |