

Installing the wall ladder and the guard-rails

The ladder elements are 2,9 metres long. Attach the ladder to the wall at the roof ladder, using M80x30 bolts, M8 fender washers and M8 nuts. The delivery includes required amount of ladder elements, according to the height of the silo, fitting boxes (1 / element) and the upper exit rails to be installed at the upper end of the ladder.

Begin dimensioning the ladder by placing the topmost rung near at the edge of the silo roof. NOTE! Cut off possible excess length from the lowermost ladder element.

Note: See "Location of landings" with dimensioned position of the top ladder. It is important that the top ladder is positioned precisely to fit the roof ladder and landings.

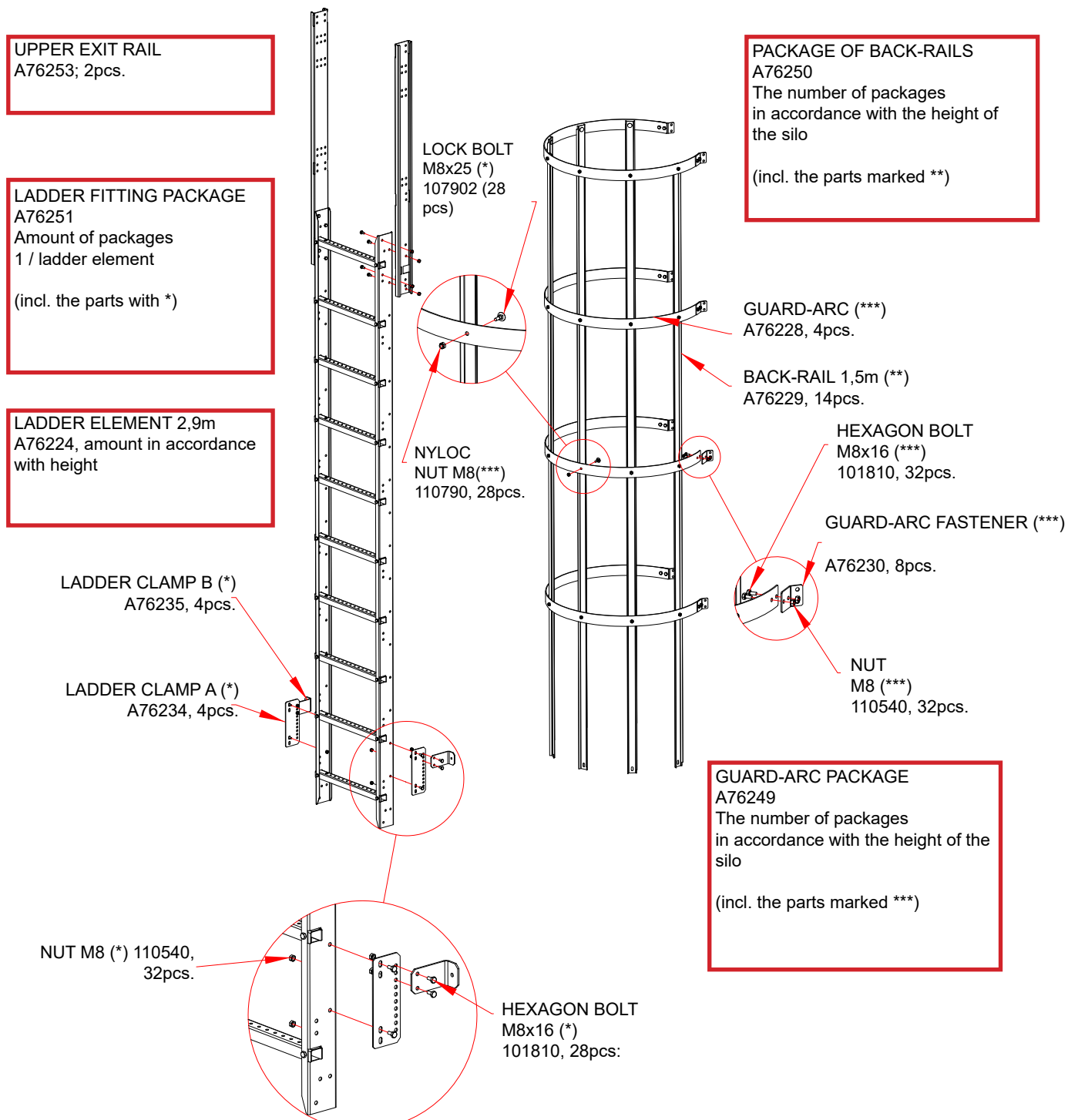


Fig. 1: Parts for wall ladder and guard-rails (optional).

Installing the guard-arcs and the guard-rails (optional)

The guard-rails must be assembled at a height where the uppermost guard-arc comes at the upper ends of the upper exit rails.

At the lower end of the ladder, the guard-rails extend to the height of 2,2 -3 m from the ground.

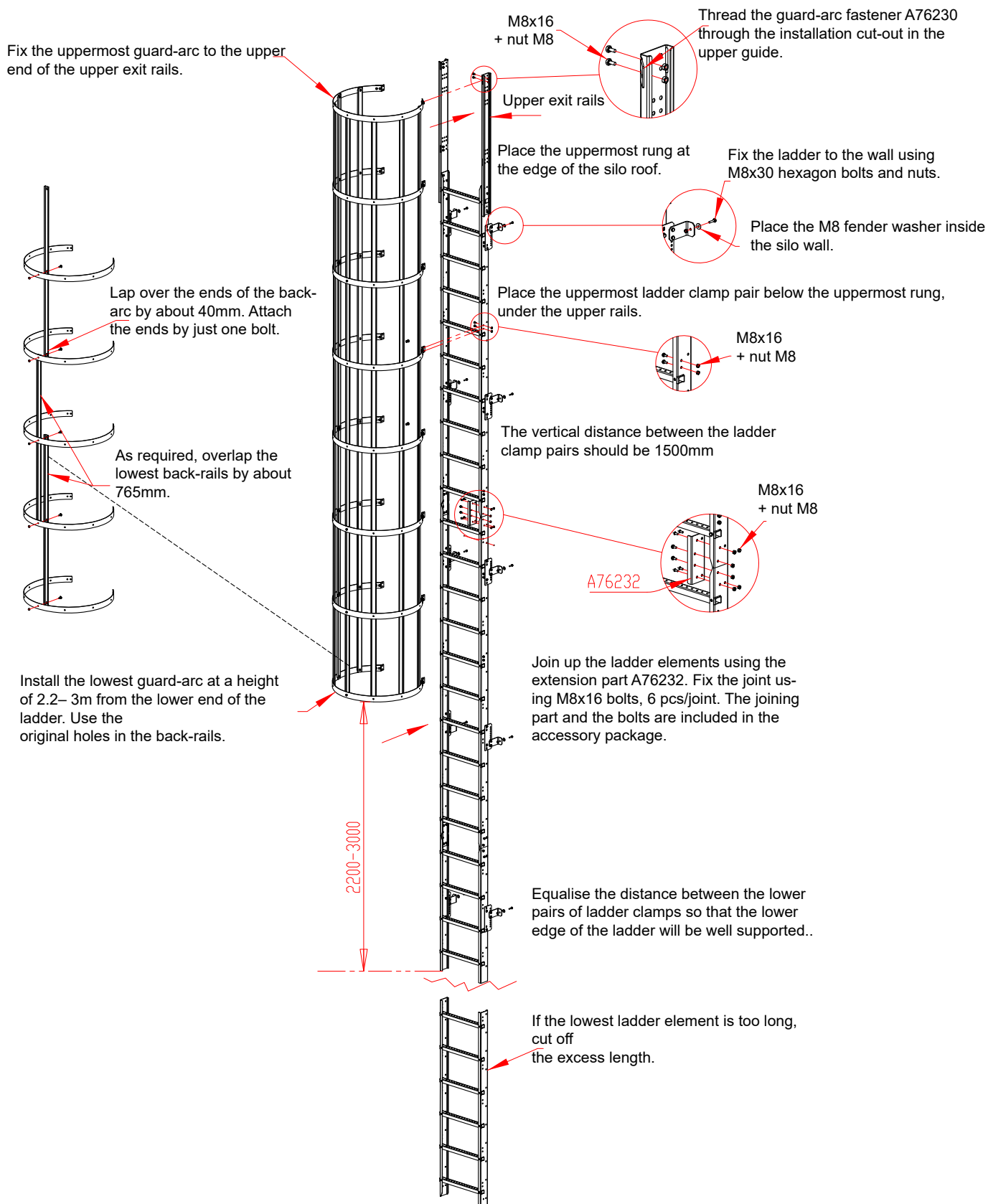


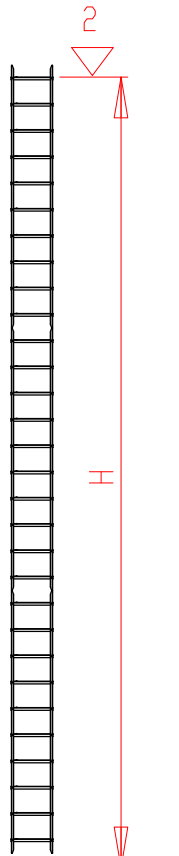
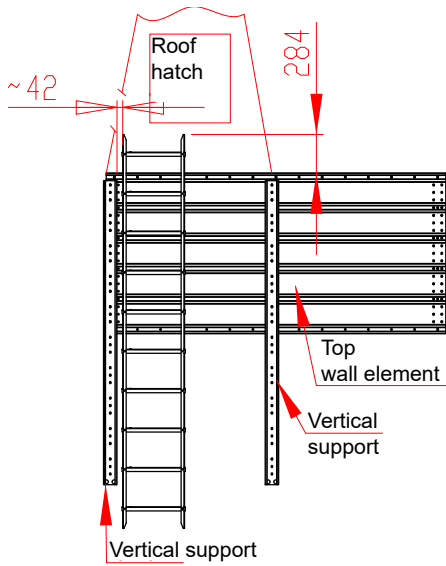
Fig. 2: Assembly instructions for wall ladder and guard-rails (optional).

Location of the landings

For location of the landings a reference has been made to the standard SFS-EN ISO 14122-4

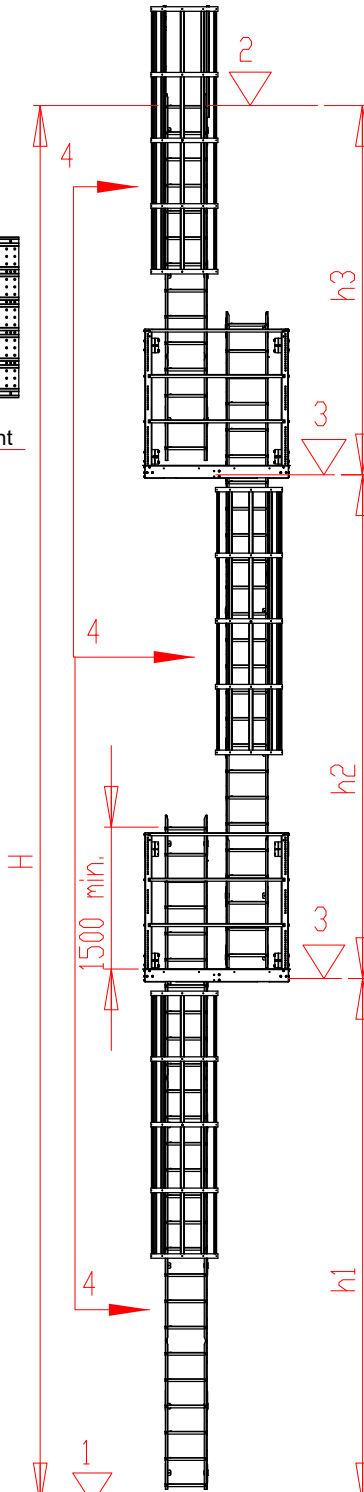
Install the uppermost guard-arc about 100 mm below the bottom of the landing

Positioning the top ladder element



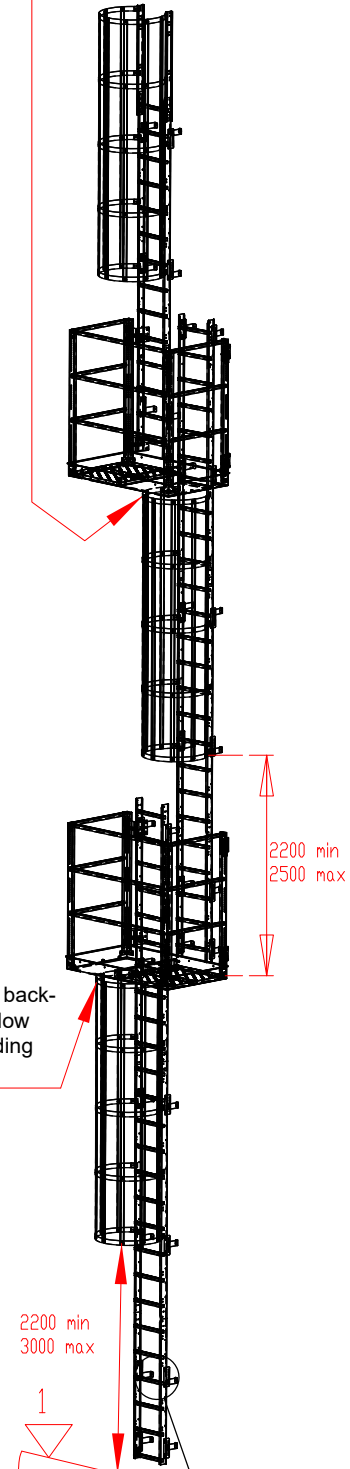
Hmax = 10000mm

Fig. 3a Without landing, ladder (solid run of ladder)



Hmax = 6000mm

Fig.3b Ladder with discontinued run



- 1 Exiting area
- 2 Entering area
- 3 Intermediate platform or landing
- 4 Run of ladder

In case the assembly includes landings, the ladder clamps shall be turned behind the ladder

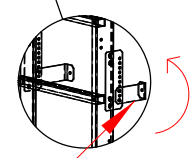


Fig. 3.