

# Installation and operating instructions

## SAMPLER AND MEASUREMENT OF MOISTURE CONTENT

408158 (en) 02-2021



# CONTENTS

Sampler and measurement of moisture content.....	3
Spare parts drawing .....	6
Sampling into a bucket .....	7
Leading the sample further away from the sampling device. ....	8
EU Declaration of Conformity .....	9



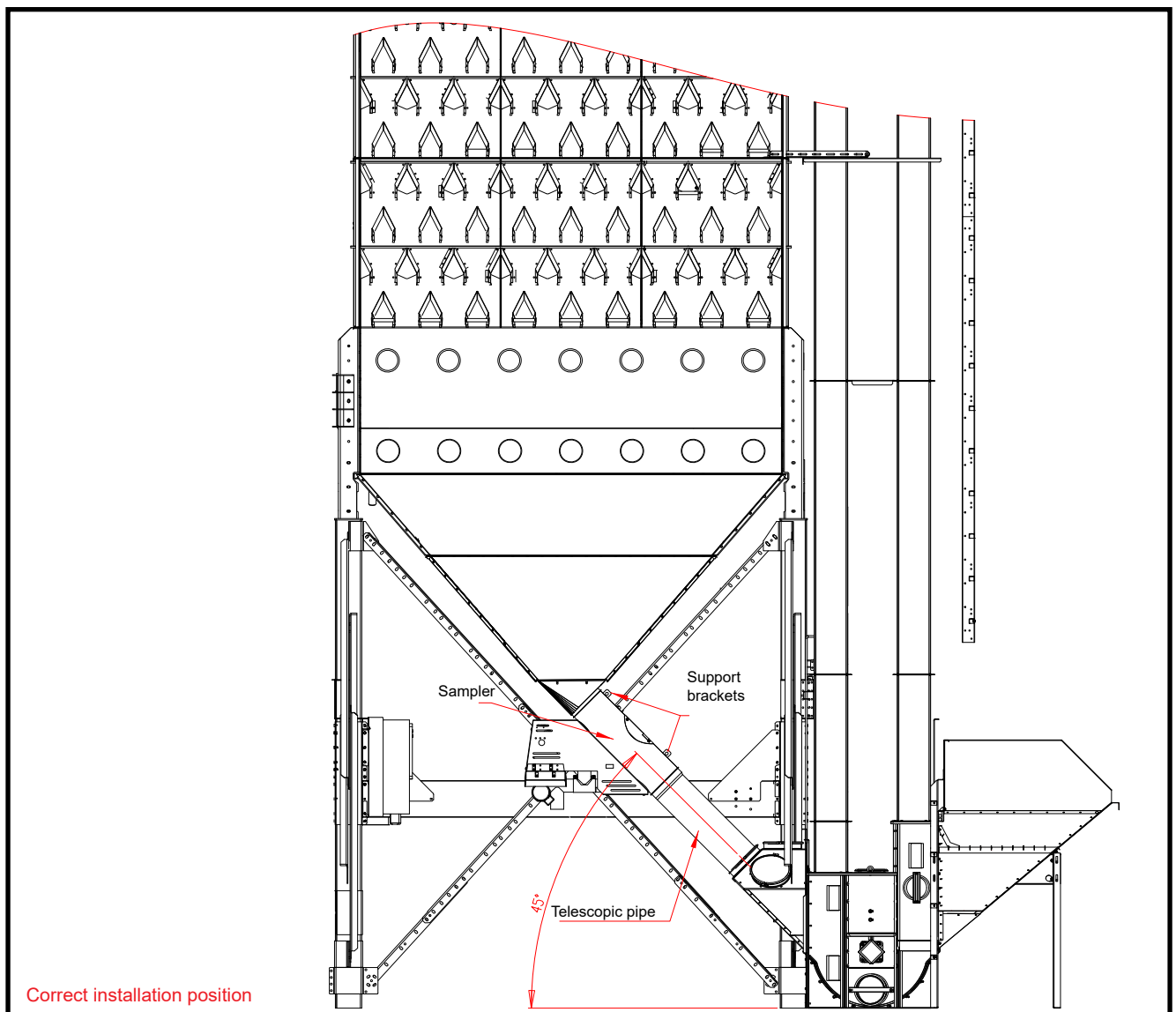
## Sampler and measurement of moisture content

The sampler shall be installed in the recirculation piping of the dryer machinery. The recommended installation place is below the spout of the feeder cone. We recommend using support brackets for supporting the sampler so that the device will not only be supported by the pipe clamps. (see Fig. 3 on page 3)

### Note!

We recommend installing the telescopic pipe after the sampler. **The telescopic pipe must not be installed on the inlet side of the sampler, because inserting the telescopic part into the body pipe of the sampler would impede the flow of grain into the sampler piping.** (see Fig. 3 on page 3)

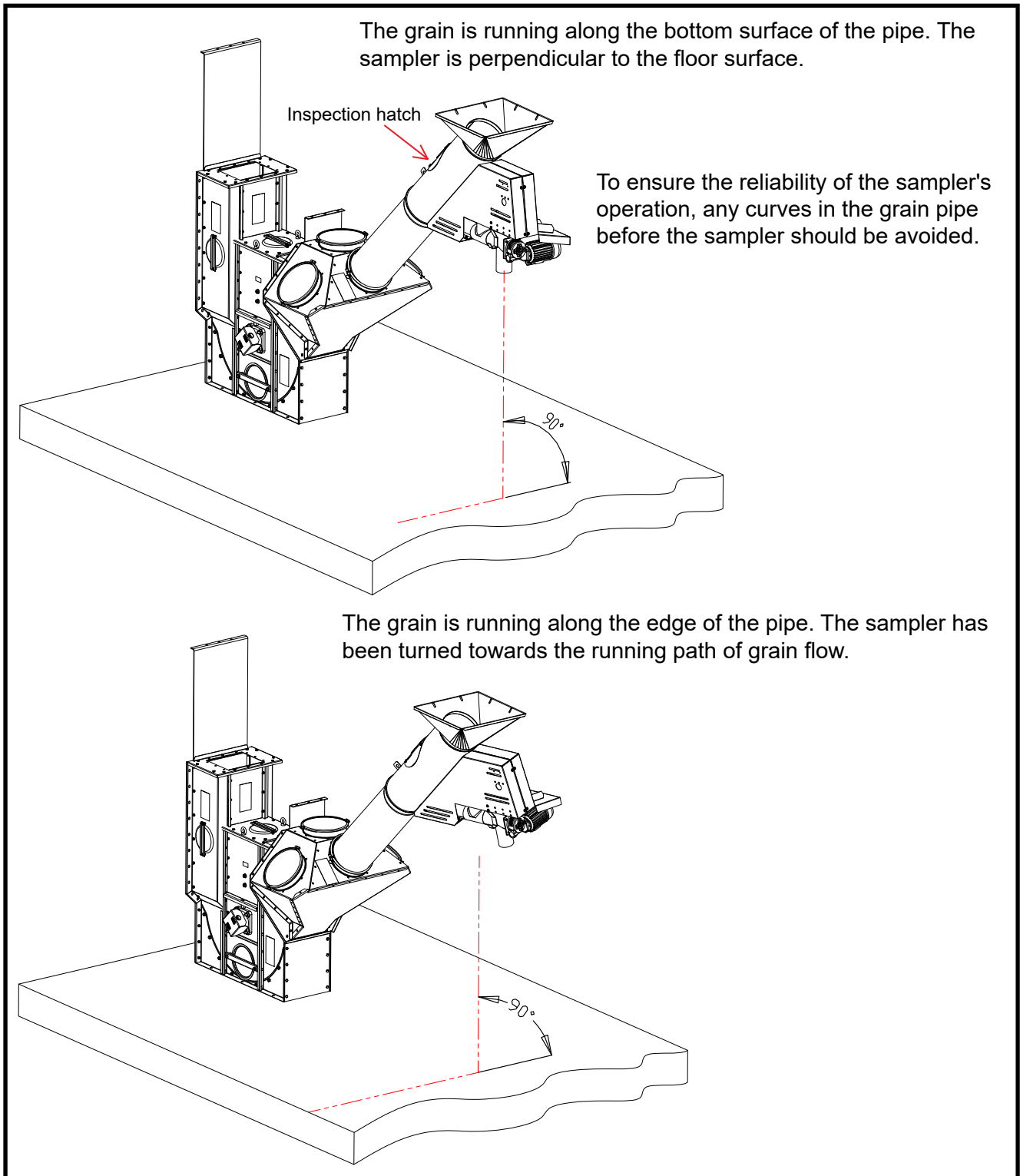
The sampler must be installed so that the body pipe of the sampler comes at a 45-degree angle to the floor level. (look picture on page 3)

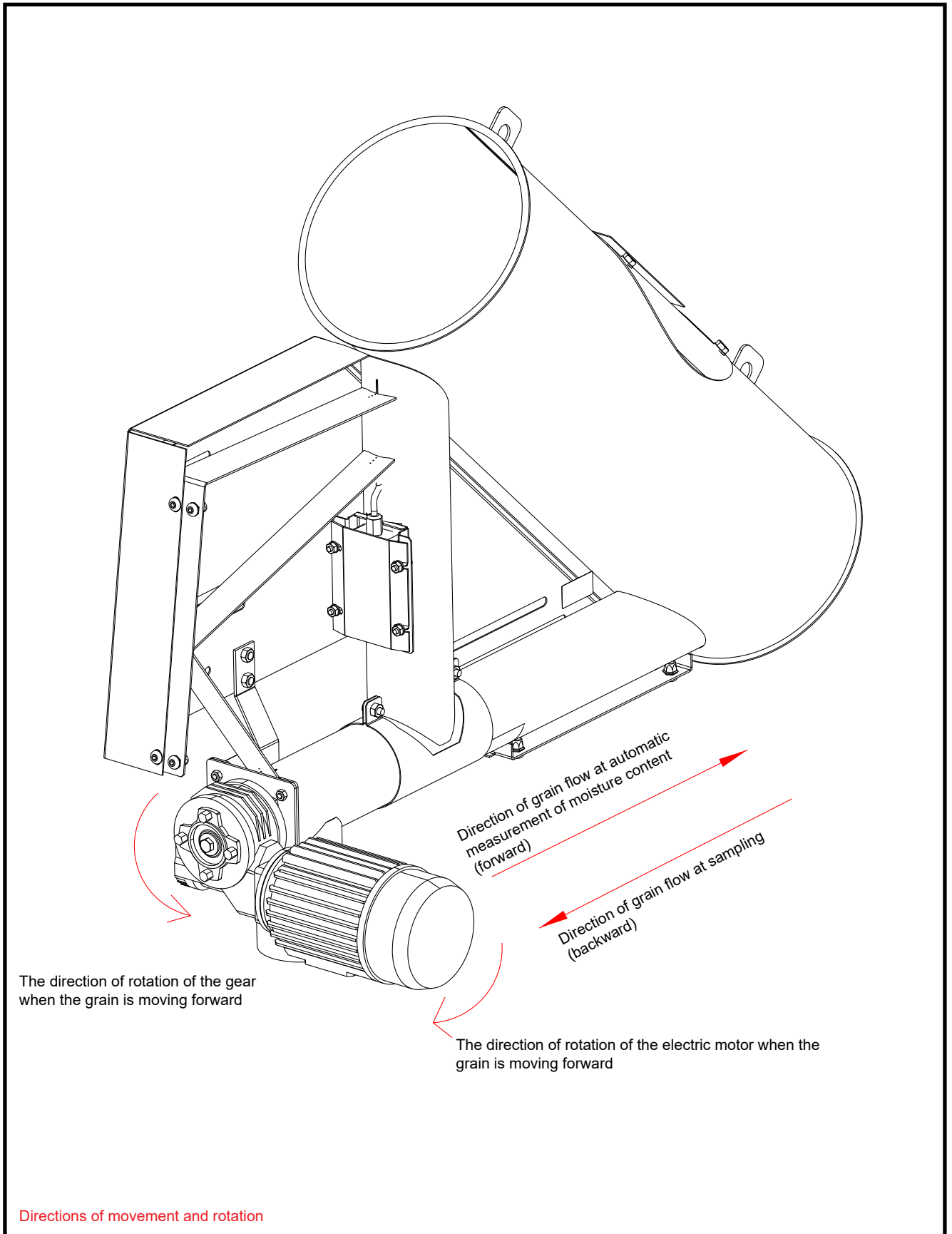




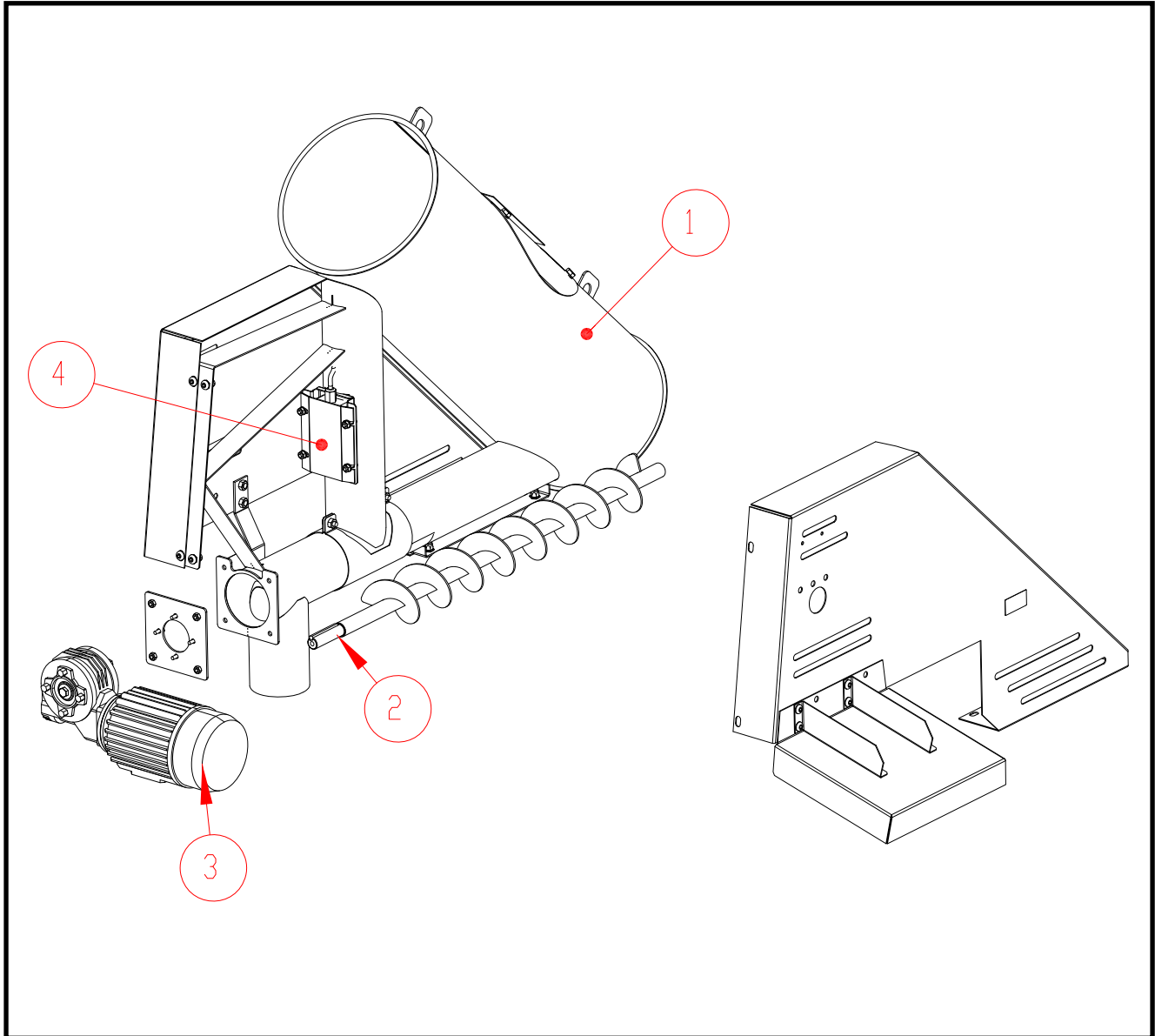
The outlet connector on the sampler must be perpendicular to the floor level (see drawings below).

You can check through the inspection hatch that the grain flow is passing along the lower surface of the pipe during recycling so that a part of the grain flow will enter the vertical pipe of the sampler. If necessary, the sampler can be turned slightly to make the grain stream hit the sampling pipe better.





## Spare parts drawing



Row	Item	Name
1	A76507	SAMPLER BODY D250 M20
2	A76514	SAMPLER CONVEYOR SCREW M20
3	304010	MOTOR KV MOM.SUPP. 0,18KW VSF-045 I=102
4	A76129	MOISTURE SENSOR



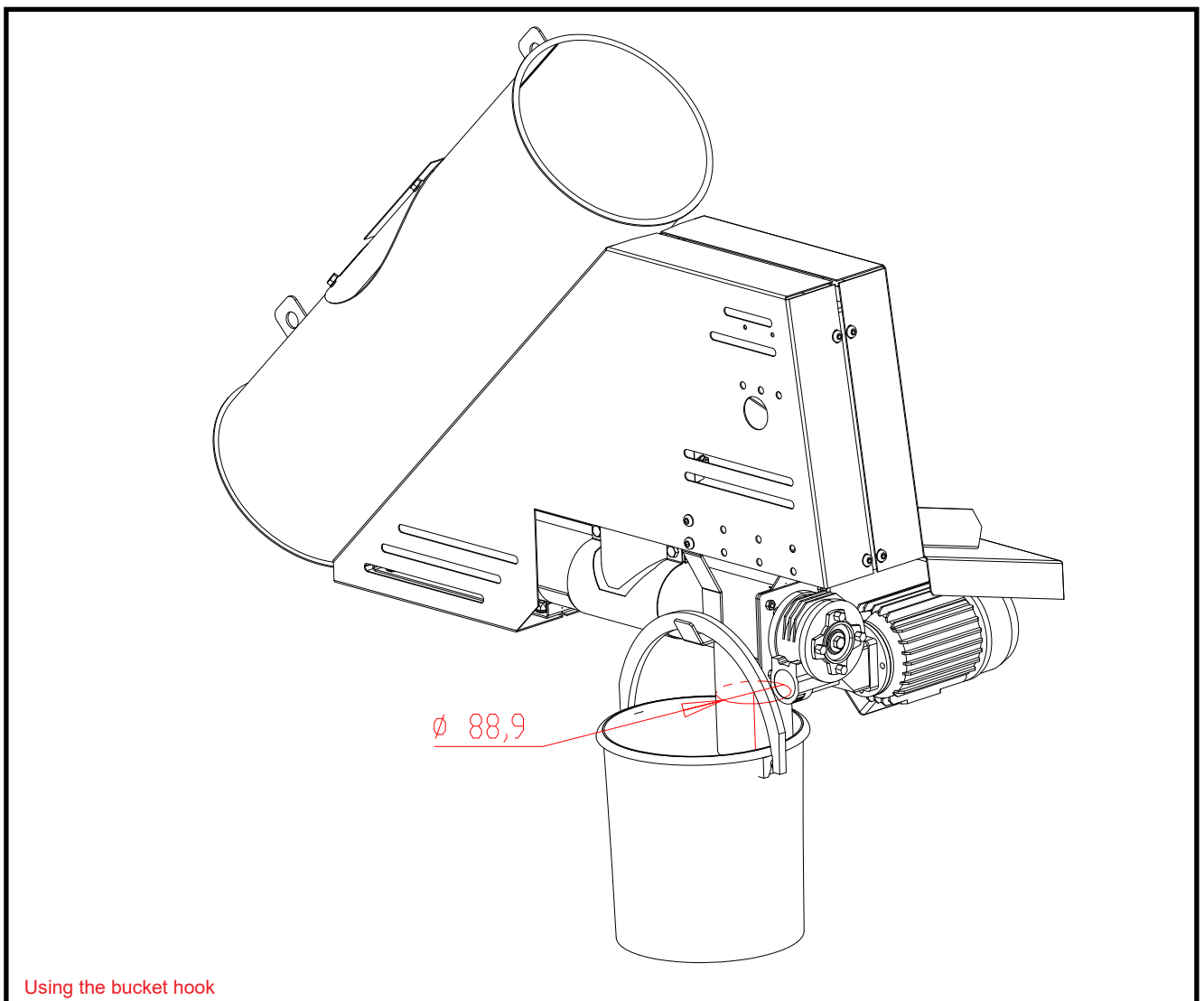
## Sampling into a bucket

A grain sample can be taken from the sampler into a bucket. The sampler has a hook for hanging the bucket. (see drawing below)

### How to take a representative sample

A representative sample consists of sub-samples, the number of which is determined by the size of the grain batch. The partial samples are collected in a bucket and mixed. A required amount of grain is taken from the bucket into the sample bag.

The automation of the Ultima control system automatically selects the correct amount of partial sub-sample based on the weight of the grain batch. The calibration of the humidity sensor in the Ultima control centre shall be performed according to the instructions Ultima system. For more information on sampling, see the manual for Ultima.





---

## Leading the sample further away from the sampling device.

The sample can be lead further away from the sampling device by means of a flexible plastic hose. The flexible plastic hose shall run as vertically as possible avoiding any extra curves.

The diameter of the flexible plastic hose must be 90 mm so that it fits in the outlet connection on the sampler.

Type of the flexible plastic hose:  
PURFLEX P 2 PU P2PU090 (Size; diameter D90 mm)



Picture of expanding pipe





---

## EU Declaration of Conformity

**ANTTI-TEOLLISUUS OY**  
Koskentie 89  
FI-25340 KANUNKI; SALO  
Tel.: +358 (0)2 7744700

declares that

### **Sampler and measurement of moisture content**

conforms with the provisions of the following directives:

- **Machine Directive 2006/42/EC**

**Kuusjoki 01.05.2020**

**Kalle Isotalo**  
Managing Director